

ArcBI TS Newsletter

Inside this issue:

Password Stuff	1
A/R Averages	1
ICD-10 Tips	2

ArcSys Hot Tip

The Red Planet A/R averages for its client base are:

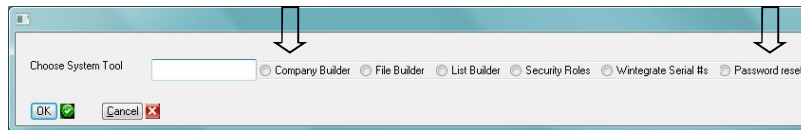
AVERAGE A/R	432510.78
A/R RATIO	1.8915
DAILY CHARGES	10933.01
DAYS TO COLLECT	60.1923
CURRENT	45.3461%
OVER 30	13.7307%
OVER 60	8.7692%
OVER 90	4.6153%
OVER 120	5.5%
OVER 150	19.3846%

Compare these numbers with those on your end of cycle report to get a baseline. Watch for changes month to month.

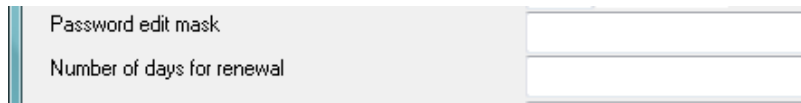
More Password Stuff

Now that everyone has gone through the arduous task of changing passwords and various feedback has been received, some new design enhancements have taken place. (Yes, we all wish we could have had better foresight.)

The following information is applicable to Super Users. (You'll know you are a Super User if you see a "key" icon in the lower right corner of your menu.) Clicking on this icon gives you a list of choices:

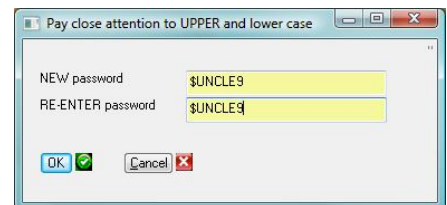


If you choose *Company Builder*, pay attention to these two fields. If left blank, the edit mask is assumed to be 511 which means at least 5 alphas, 1 numeric and 1 special.



If the "days" field is left blank it defaults to 180. Change these numbers to make life easier for your staff (but possibly less secure).

If someone forgets their password, use the *Password reset* option shown in the "key" icon. It will prompt for a password (the same as used when setting up a new user). A screen will appear. Enter in the user logon name. The default password the user can use is the letter X.



When the user next logs on, they will enter the password of X (or whatever you gave them) and they will see another prompt giving the rules for the password. Plus, if the user wants, they can SEE what their password is while typing it in by clicking Yes.



ICD-10 Tips



With the October 1 deadline now being 2 months away, time is getting very short to gain confidence on meeting the new coding requirements. The following is a review of our recommendations. (You can, if so desired, elect to enter ICD-9s for the rest of your life with Red Planet.)

On your report menu you will see an option to run the DX Utilization Report. This report gives a list of the most commonly used ICD-9 codes and their ICD-10 counterpart(s). As other client sites have been testing and studying these mappings, it seems like the mapping makes sense 97% of the time. But that remaining 3% can be potentially troublesome. Remember, we are expanding from 18,807 ICD-9 codes to 69,823 ICD-10 codes—nearly 4 times.

When a batch of charge transactions is proofed/posted, a number of edit checks is performed by Red Planet.

- You have control in the insurance master screen to determine if they are to receive ICD-9 or ICD-10 by changing the field DXTYPE. If *nothing* is entered in this field, then Red Planet *assumes* they are to receive ICD-9 through Sept. 30 and then ICD-10 starting Oct. 1.
- The diagnosis entry screen has a field called Map. Every ICD-9 code has at least one entry in the Map field which contains the list of ICD-10 codes to which it maps. For each ICD-10, the Map field contains the ICD-9 code to which it maps. When Red Planet is validating the diagnosis code, it looks to the insurance master screen to see what to do. If a “9” was entered and the insurance wants a “9”, nothing happens. If a “10” was entered and the insurance wants a “9”, then the first mapped code listed for that “10” is used and stored by Red Planet. Similarly, if a “9” was entered and the insurance wants a “10”, then the first mapped code listed for that “9” is used and stored by Red Planet. As an example, ICD-9 250.00 maps to ICD-10s E11.9 and E13.9. If you entered 250.00, then E11.9 would be sent to the insurance starting 10/1/15. *If you don't agree with the mapping as shown in the Dx setup screen, you can change it.*
- ICD-10 has specific codes for left, right, bilateral and unspecified. Although we know of no specific edit checks by an insurance company for requiring something other than unspecified, Red Planet *will not* accept an “unspecified” ICD-10 IF a specific left or right ICD-10 code is also available.
- There are new Ob/Gyn ICD-10 codes known as Z3A.xxx. For these codes there is no backward mapping to an ICD-9.