

# ArcBI TS Newsletter

## Inside this issue:

Gotham	1
Insurance Edit Check	1
New Font Feature	2

## ArcSys Hot Tip

Do you want more robust edit checking on setting up the insurance for patients? An edit program is available to assist with this feature. We refer to it as EDITCHKINS. It is invoked when the patient registration screen is filed. It performs 24 edits on commonly missed or error prone situations on defining the insurance for primary and secondary carriers.

## Once There Was Gotham

Looking backwards through time, I thought it might be of interest to some readers to reflect on an early client of MegaWest Systems known as Pacific Physician Services. Or, as we called them, PPS.

PPS was the brain-child of Ron Lossett, PhD and Dr. Gary Groves. Their business was based in Redlands CA and originated around the mid 80s. They came up with this "idea" where they could provide a staff of physicians and then negotiate contracts with insurance companies. For a set fee per patient per month, they could provide all the medical services. Patients loved the idea. Insurance companies were in love with the concept. And so their little idea caught on like wild fire.

In those days there was no software to manage such an operation so MegaWest was brought in to develop the ground breaking software to manage accounting, payroll, payables, the a/r billing, cost tracking and reporting to the insurances. Offices started popping up in Loma Linda, San Bernardino, Fontana, Apple Valley, Rialto and other locations. The growth and complexity of the project became a huge undertaking.

This was in the days of "green" screens. The computer system used at this time was known as a General Automation 8000 (predecessor of Mvbase) and could handle as many as 128 terminals. After their second computer was acquired and a third was on the horizon, the computers were given names: Batman and Robin being the first two. Eventually Joker, Batgirl and Penguin all joined the ranks and the collection became affectionately known as Gotham. Each computer could handle 8 disk drives each holding 128MB of data and the memory capacity of each machine was 512KB (yes, you read that correctly, KiloBytes).

Eventually the organization grew to 4800 physicians managing 680,000 patients and then became acquired for \$355M by MedPartners in 1995. New management, IBM computers running AIX and an in-house programming staff slowly retired the Gotham complex.

(Trivia note: The Thoughts-for-a-day known as the "Stress Tips" were a contribution made by the night-time computer operator for Gotham.) - *Michael Archuleta*



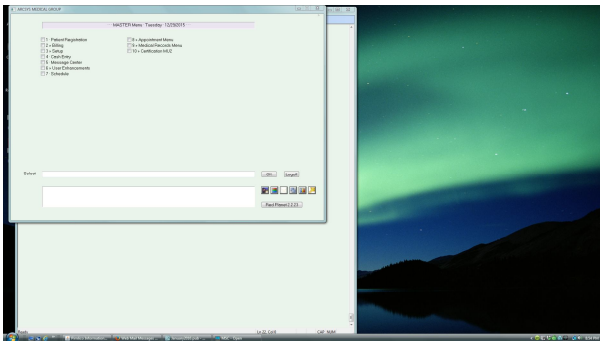
## New Red Planet Feature Makes Users Look Years Younger!



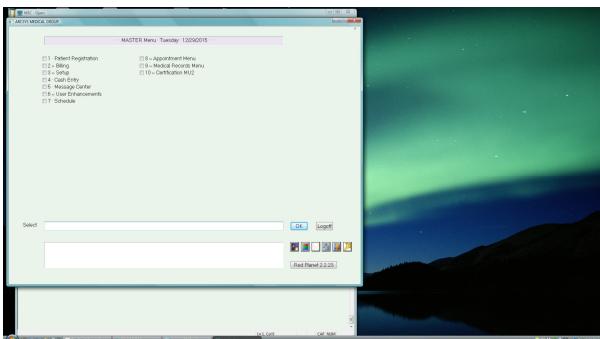
Well, maybe it is a bit of a stretch, but the newest feature incorporated into **Red Planet 2.2.23** will allow some users to shed their reader glasses!

Computer monitors come in a wide variety of resolutions. Before logging into your Red Planet account, click on Setup, Terminal and then decide if you want 24 (default) or 51 lines. This controls how much detail is displayed in a *list*. Click Ok if you made a change. Proceed to logon. The rainbow icon on the menu allows each user to select a color palette of their choosing. Additionally, it allows the user to select the font size that works best for their monitor and viewing preferences. (As a side bar, the selection of a color palette has an improved interface and works much better when choosing a *color mix*.)

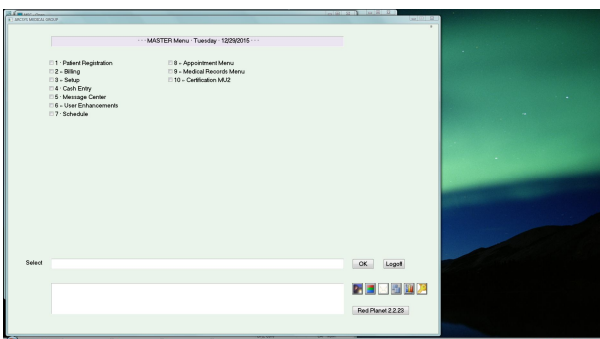
There are 4 fonts available: 8, 10, 12 and 14. Use 8 only if you have a “tiny” monitor whose x (width) resolution is 800 or less. The font size of 10, is the default. If you have a monitor that supports a large resolution, you may want to experiment using 12 or 14. The screen shots show how much space on a monitor with a 1920 x 1080 resolution is used.



Font size 10. This is the default.



Font size 12.



Font size 14.

If your work takes you from one pc to another and they have different resolutions, it may be best to stick with a font size of 10 since it (like color) is remembered based on your logon name.