

ArcBI TS Newsletter

Inside this issue:

- Grids 1
- Conference 1
- Skyscrapers 2

On September 20, 2012, ArcSys will be holding its first User Conference at the Salt Lake City Marriott Downtown at City Creek. Classes covering “Wow, I Didn’t Know That”, Report Building, Menu Customization, and Meaningful Use are among the hi-lites. Check out www.arcsysmed.com for more details.



New Grid Feature

A new feature is available and it controls the way a table or list is displayed.

The traditional way of displaying a table is shown here. This method uses a fixed space font.

The same data can now be displayed in what we refer to as the Grid method and is shown here.

What are the differences and why would you want to change?

Mostly, it is a matter of taste. The grid method uses the Arial font which many people feel is easier to read. The column headings appear in bold. If you like how a spreadsheet appears, you will like the Grid method.

The font is smaller, too. This means that if you felt the traditional table display was hard to see, you may not like this method even though the font is easier to read.

Because the font is slightly smaller, the

grid method can display 20% more lines of data on one screen. This means that you will be paging up and down, less. There are

#	ddate	doc	type	signed	weigh	heigh	bmi	temp	pulse	bp	resp	bywho	chiefcomp
1	12/13/11	AHN	COMPREHENSIV		140	80	15.4			140/90		MSC	
2	11/23/11	AHN	QUIKORDER		140	80	15.4			140/90		MSC	
3	11/22/11	AHN	COMPREHENSIV		90	60	17.6			110/60		MSC	
4	06/14/11	STANDT	INTERIM	Y								HLA	
5	06/09/11	STANDT	COMPREHENSIV	Y	220	000		98.7	76	130/72	16	HLA	Sleep apnea
6	05/27/11	STANDT	INTERIM	Y								HES	
7	05/27/11	STANDT	INTERIM	Y								HLA	
8	05/05/11	STANDT	INTERIM	Y								HES	
9	05/05/11	STANDT	INTERIM	Y								HES	
10	05/02/11	STANDT	PHYSICAL	Y	221	71	30.81	98.2	68	120/64	16	HLA	PHYSICAL
11	11/01/10	STANDT	COMPREHENSIV	Y	222	71	30.95	98.3	80	130/70	16	HLA	6 month f/u
12	07/15/10	STANDT	INTERIM	Y								HLA	
13	07/15/10	STANDT	LETTER	Y								HLA	

#	ddate	doc	type	signed	weigh	heigh	bmi	temp	pulse	bp	resp	bywho	chiefcomp
1	12/13/11	AHN	COMPREHENSIV		140	80	15.4			140/90		MSC	
2	11/23/11	AHN	QUIKORDER		140	80	15.4			140/90		MSC	
3	11/22/11	AHN	COMPREHENSIV		90	60	17.6			110/60		MSC	
4	06/14/11	STAND	INTERIM	Y								HLA	
5	06/09/11	STAND	COMPREHENSIV	Y	220	000		98.7	76	130/72	16	HLA	Sleep apnea
6	05/27/11	STAND	INTERIM	Y								HES	
7	05/27/11	STAND	INTERIM	Y								HLA	
8	05/05/11	STAND	INTERIM	Y								HES	
9	05/05/11	STAND	INTERIM	Y								HES	
10	05/02/11	STAND	PHYSICAL	Y	221	71	30.81	98.2	68	120/64	16	HLA	PHYSICAL
11	11/01/10	STAND	COMPREHENSIV	Y	222	71	30.95	98.3	80	130/70	16	HLA	6 month f/u
12	07/15/10	STAND	INTERIM	Y								HLA	
13	07/15/10	STAND	LETTER	Y								HLA	
14	06/14/10	STAND	PHYSICAL	Y	221	71	30.81	98.1	82	120/70	16	HLA	CPX
15	11/16/09	STAND	ADMITTANCE	Y	214	100		99.2	82	130/62	16	HLA	6 MONTH F/U

vertical lines which make the display column in appearance and lends to ease of reading—especially when there is a lot of data.

Lastly, this new approach opens the door for future enhancements since each “cell” can be addressed and have functions assigned to it.

How to set up? First of all, you need to have access to the Company Builder screen. In this screen there is a new field called “Grid style users”. Enter a comma-separated list of users, or * for all users.

Spawning and Skyscrapers



For whatever reason, it always seems like the subject of “Red Planet Spawning” always needs further explaining. Thus, this article will attempt to provide sufficient illumination that those who are hopelessly lost on the subject will find their way out of the cave.

Spawning is an ArcSys computer mechanism that allows you to suspend what you are doing (task A) and start something else (task B). When you are finished with B, you return to A and resume what you were doing. Why the word “spawn”? It is monosyllabic, it implies creating something different, and the word sticks in your head.

You are quite accustomed to this process. You start in a menu (task A), choose an option and a screen appears (task B). When you finish with B, the menu reappears.

Nothing hard to understand. Where it can get complex is when there are additional buttons that allow you to go elsewhere. For instance, let’s say you are in the patient registration screen and we will call this task B. On the screen is a button named Schedule. When you click this button you start up task C. On choosing a date and doctor you then click on the Appointments button. This starts task D. You click on an open slot and this starts task E.

Good so far? Now, let’s say you get into the patient field, do a cross reference lookup, and you can’t find the person you were looking for. So you click on the button, Makenew, and now you’ve started task F. Task F looks just like the screen back at B. But, in F, you can bring up a *whole different patient or create a brand new patient*. (And, if you were really brave, you could click on the Schedule button inside task F...)

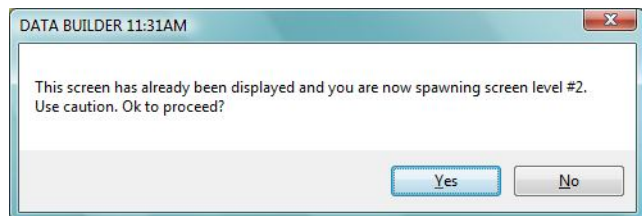
Once you were finished with task F, you would escape back to E, D, C, and finally B. The tricky part is when you get side-tracked when you are in F and completely forgot about B.

So what does this have to do with skyscrapers, you may well ask? Imagine a building with many floors. The layout on each floor is exactly the same with the exception of the ground floor. You can think of the ground floor as being the menu—task A. When you get in the elevator, there is only ONE floor that you can get to, 2. Floor 2 is like task B. You can move

from room to room on floor 2. This is really like going from task B to C, D, and E in the example given above.

But, when you wanted to go to task F, you were magically moved to floor 3 of the skyscraper. Since you are on floor 3, you can go to any room on the floor and bring up other screens and data. Conceivably, you could put yourself in a situation where you go to floor 4, and so forth. (There is a practical limit, the software won’t let you go over the 9th floor.)

The only way you know you are getting moved to another floor is that a message will appear.



Once you are in such a screen, the help message at the top of the screen will *briefly flash in pink* as you move from field to field.

(For what it is worth, you have no capability to do anything similar to the above on your browser or smart phone.)

There is one more subject to address regarding the subject of spawning. On your menu is an icon that looks like:



When you click this menu option, this actually creates *another skyscraper* and puts you on its ground floor. (You will get a warning for the first 4 times you try doing this. After that, the software assumes you know what you are doing and won’t pester you anymore.) Since you are in another Windows session (skyscraper) you can do things independent of the first session where you started. And, of course, you can continue making more skyscrapers until the city planning authority (data base license availability) puts a halt to your escapades.

With a little experimenting on your part, you can test these features. It has purpose and utility and you will find times when it is quite beneficial.